



**OFFICIAL**

Date: Tuesday 26<sup>th</sup> August 2025  
Time: 10.30am -12.30pm  
Venue: Maryhill Health & Care Centre,  
51 Gairbraid Ave,  
Glasgow  
G20 8FB

**North West Locality Engagement Forum**

**Agenda**

This meeting can also be accessed on Microsoft Teams:

Meeting ID: 316 226 757 85

Passcode: NH3zZ7jx

10.30am	Welcome, introductions & apologies	Chair
10.35am	Minutes & action log	Chair & CEDO
10.40am	Chris Furse Robert Smith	MIP Project Manager, GC HSCP Facilitator, Weekday Wow Factor
11.10am	Lynn MacDonald	Service Manager, Alcohol & Drug Recovery Service
11.30am	<i>Comfort break</i>	
11.45am	Chair and member updates	LEF members
12.10pm	LEF Public Meeting	LEF members
12.30pm	Close	

**Date and venue of next meeting**

Tuesday 7<sup>th</sup> October August 2025  
Partick Burgh Hall,  
9 Burgh Hall St,  
Glasgow  
G11 5LW

**OFFICIAL**



**Glasgow City HSCP  
North-West Locality**

**North West Locality Engagement Forum (NW LEF)  
Minute of Meeting held on Tuesday 26<sup>th</sup> August 2025  
between 10.30am -12.30pm at Woodside Health & Care Centre**

<b>Present</b>	
<b>Name</b>	<b>Designation</b>
Michael McNamara (Chair)	Public Representative/Young Carers Community Council Representative
Anna Barclay	Glasgow City Mental Health Network
Cameron Cuthbertson	Weekday Wow Factor
Chris Furse	Project Manager MIP
Colin Menabney	Chief Executive Officer, Enable Glasgow
Ellen Wright	Public Representative/ Knightswood & Anniesland Community Council Representative
Elsbeth Kerr (Vice-Chair)	Public Representative/Phoenix Centre Drumchapel Community Council Representative
Katrina MacFarlane (Minutes)	Community Engagement & Development Officer, North-West Locality
Lewis Gibson	Operations Manager, Enable Glasgow
Lynn MacDonald	Service Manager, Glasgow Alcohol and Drugs Recovery Service
Mark McBay	Public Representative/Changing Minds & Hoarders Group Representative
Maureen Bowers	NHS GGC
Nicky Nielson	Public Representative/Enable Scotland
Pasna Sallis	Weekday Wow Factor
Paul Ryan	Chair IJB
Robert Smith	Weekday Wow Factor
Thomas McKinlay	Public Representative/Merchant City and Trongate Community Council Representative
<b>Apologies:</b>	
Brian McCarthy	Recovery Project Manager
Gareth Greenaway	Planning Manager, North-West Locality
Lillian Woolfries	Public Representative/Glasgow Disability Alliance Representative
Marie McGinn	Glasgow Carers
Muriel Anderson	Public Representative/Partick Annexe

**OFFICIAL**

<b>1.</b>	<b>Welcome</b>
	Michael welcomed everyone to the meeting. Apologies were given and recorded.
<b>2.</b>	<b>Previous Meeting Notes, Action Log and Matters Arising</b>
	Meeting notes and action log were approved.
<b>3.</b>	<p>Michael thanked and welcomed all the speakers for attending and speaking to the LEF.</p> <p>Chris Furse’s presentation provided updates on Maximising Independence in Glasgow. The project was set up over four years ago to support people. The overall ambition of the project was to put people at the centre of decision making on what matters most to them. He explained how the maximising independence approach informs the way we design and deliver our services and is now at the core of everything the HSCP does. His presentation identified the range of partners involved in the project and the activities they provide.</p> <p>The Weekday Wow Factor specialise in improving lives by keeping people active, connected, independent and safe within their own homes and communities. Pasma Sallis highlighted how they use Occupational Therapy principles to create multi-award winning programmes including: Daytime Discos, Minibus Adventures, Online Zoom Discos and Tai Chi and WOW Social Enterprise. The team gave the LEF members a taster of daytime discos. Additional information on the Weekday Wow Factor can be accessed via the <a href="#">link</a></p> <p>Lynn MacDonald’s presentation provided updates on The Thistle, Glasgow’s Safer Drug Consumption Facility. Staffed by a multidisciplinary team it offers people a safer place to inject their own drugs, harm reduction advice to minimise the risk of overdose and if required intervene with assistance if a person does overdose. Lynn shared the evidence on attendance rates and how they are preventing drug-related deaths. The slides demonstrated how they are using the voices of lived and living experience to shape and evolve the service.</p>
<b>4.</b>	<b>Chair and Members Updates</b>
	<p>Colin shared that Fortune Works have been twinned with a community in Nuremberg, Germany for a number of years. This is the first exchange since the pandemic and FW hosted several activities and events for their guests. FW will visit Germany later this year.</p> <p>Elsbeth shared that planning continues for the Drumchapel Christmas Market. The event will be on Thursday 27<sup>th</sup> November. There will be the Christmas lights switch on and Santa will be in attendance.</p>

**OFFICIAL**

	<p>Anna shared the range of activities planned across the city during suicide prevention Further information is available via their facebook page. She shared that Mental Health and Suicide training ASSIST is available via the GMHN.</p> <p>Ellen shared that Netherton is planning a Christmas fayre and pantomime. Netherton Seniors Fayre is on Friday 17<sup>th</sup> October and is supported by Age Scotland, Glasgow Life and the HSCP.</p> <p>Katrina provided details on the GGC Annual Review and reminded members that attendance must be booked and questions must also be received in advance.</p>
<b>5.</b>	<b>North-West LEF Public Meeting</b>
	<p>Katrina updated members on the decisions of the members Public Meeting Short Life Working Group. This included the meeting structure and format of the meeting.</p> <p>Katrina requested members raise awareness of the meeting across their networks and invited them to distribute the printed flyers. She advised it will be promoted on the HSCP social media sites and circulated across the locality database contacts including GP practices, dentists, optometrists and pharmacists.</p> <p>She advised that in addition to HSCP colleagues attending to present on Primary Care, Addictions, Mental Health, Sexual Health and Homelessness Third Sector organisations will contribute within the meeting and attend with marketplace stalls.</p> <p><b>Action</b></p> <ul style="list-style-type: none"><li>• <b>LEF members to raise awareness of the public meeting across their networks.</b></li></ul>
<b>6.</b>	<b>AOCB</b>
<b>7.</b>	<b>Date of Next Meeting</b>
	Date of Next Meeting is to be confirmed.



# **Make it Local Communities update to the NW LEF**

## **August 2025**



# Background

- Research Project linked to the Maximising Independence programme
- To learn from and evaluate the benefits of Community activity.
- To identify areas where the HSCP might learn from this to adapt their service models to build community capacity in partnership with 3<sup>rd</sup> Sector
- This update captures people's qualitative experience and further work is planned to measure quantitative benefits.
- One of the key aims is to encourage and develop networking between Make it Local Partner Organisations and with the HSCP and other statutory services.
- Modest but necessary amount of funding provided to support the projects to develop and record the activity undertaken.



# Current Activity

Seven first-phase organisations have participated in activity

- Parkhead Housing Association
- Weekday Wow Factor
- Knightswood Community Connections
- Parkhead CAB
- Nan McKay Community Hall
- Glasgow Women's Library
- Glasgow Disability Alliance



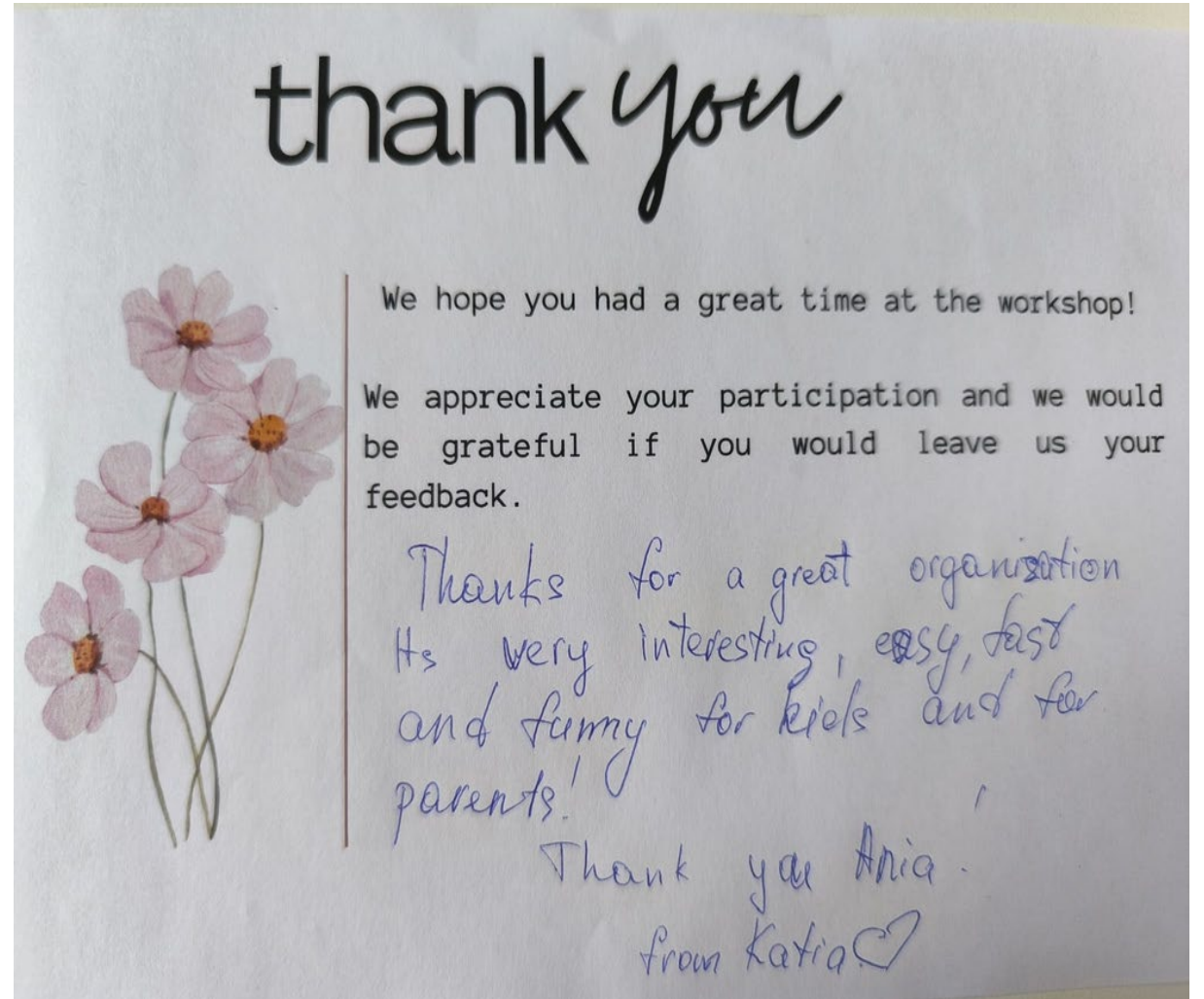
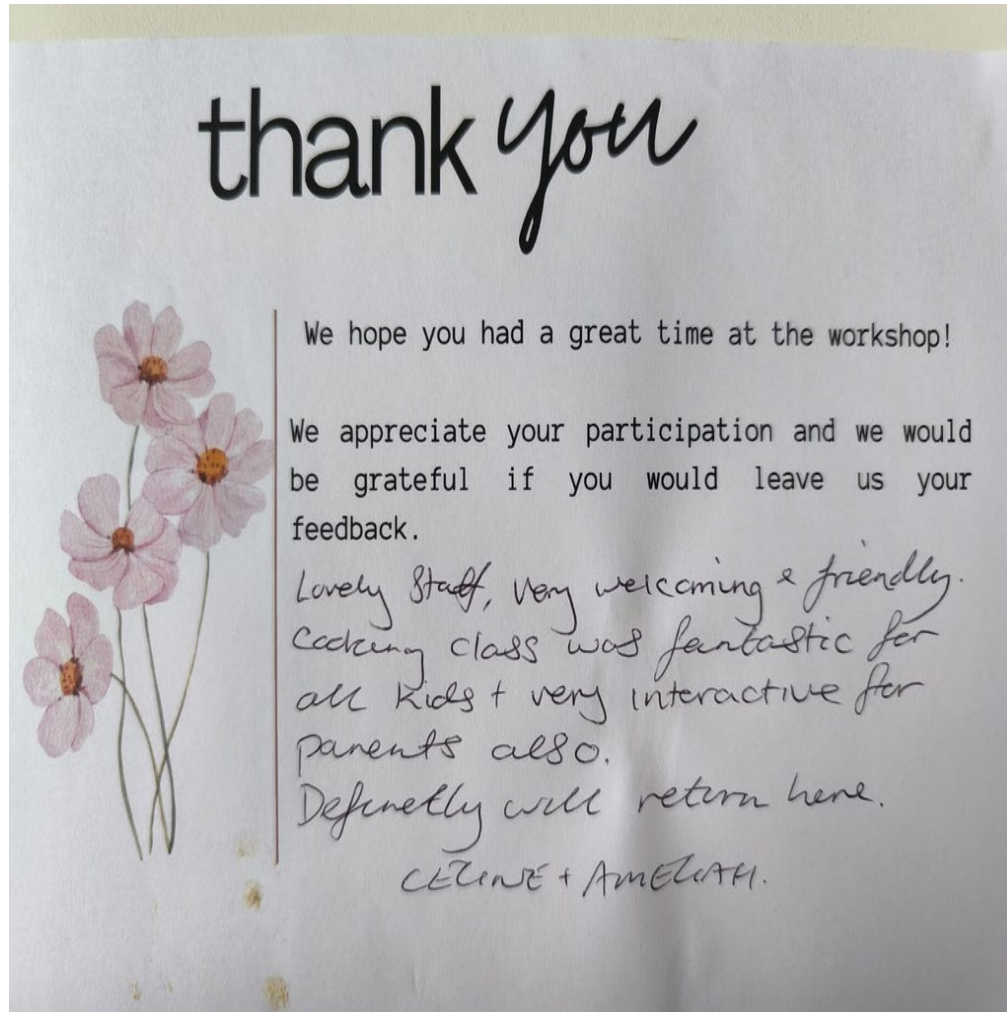
# Current and recent Activity

The range of activities includes:

- Community food activity
- Several well attended networking and information sharing events
- Footcare and hearing aid checks
- Welfare rights and benefits advice in new locations including Parkhead Hub
- Yoga, walking groups and daytime discos
- Conversation café's



# Feedback from Parkhead HA



# Weekday Wow Case Studies (names changed)

**Anne:** Attended five days after husband's funeral. Found comfort and optimism in group's support. "Happy to be with familiar faces".

**Elsie:** Faced ongoing anxiety about medical appointments. Discos provided joy, energy, and a mental break.

**Lorna:** Previously isolated. Described her mood at session as "over the moon". Highlighted the value of staying active and feeling excited about life



These stories show Weekday Wow Factor's power as an emotional anchor and source of social connection while staying physically active



# Kingsway Walking Group Survey

“I enjoy the company, getting exercise, being out in the country and going to places that I've never been before”

“Thanks for all the good walks you've taken me to, the great company”

“Love the places we go to, the mini van is very good for getting us there”

“Helps maintains fitness and alleviates social isolation”

“The walking group is very important, especially for mental health issues ...and they are free of charge”

“Very grateful for this service, Thank you all Kingsway Staff!”



# Parkhead CAB feedback

“Speaking with the advisor at my local church has really helped me sort out my benefit problems I couldn’t get an appointment at the office, and I just walked round here and got it all sorted”

“I have mobility problems my carer walked me round to the lunch club and I spoke to the CAB advisor about the housing not fixing my shower, she got it sorted and helped me write a letter”

“I made an appointment with the CAB worker to come to the office in the Gallowgate it was easy”



# Emerging themes

- A good and developing appetite for networking and sharing practice between Make it Local organisations – they have an appetite to learn can we influence this?
- Opportunity to link in HSCP and wider ‘Glasgow family’ staff including HSC Connect, Glasgow Helps and The Alliance attendance at recent events – key stakeholders with resources?
- Further potential to use health tools and measurement at community events, e.g. sit-to-stand test - could we educate on this?
- Potential to enhance linkages to HSC Connect for signposting – can we learn from how these orgs share their information locally



# Further themes and issues

- Transport always an issue - but could technology help with this?
- Potential to measure the impact of community activity on everyday life and how it helps to cope with long term health conditions – One Make it Local partner is attempting this independently.
- Funding – Make it Local is helping to develop some important additions such as enhancing the benefits of networking – how could these be maintained?
- Activities provide a link between levels and types of services, people using a food pantry also take part in learning how to cook and benefit from a community meal – can this model build long term capability?

# Photos from Parkhead HA





## Next steps ...

- Further work to evaluate and build an evidence base
- Develop further detail regarding the benefits of Make it Local activity and how this can link and support HSCP and partner services
- Work on creating visual resources
- Begin dialogue with the additional four Make it Local partners
- Detailed evaluation for the HSCP leadership - Autumn 2025

# The Thistle

## Glasgow's Safer Drug Consumption Facility

---

Glasgow City Health and Social Care Partnership  
Glasgow City Alcohol and Drug Partnership

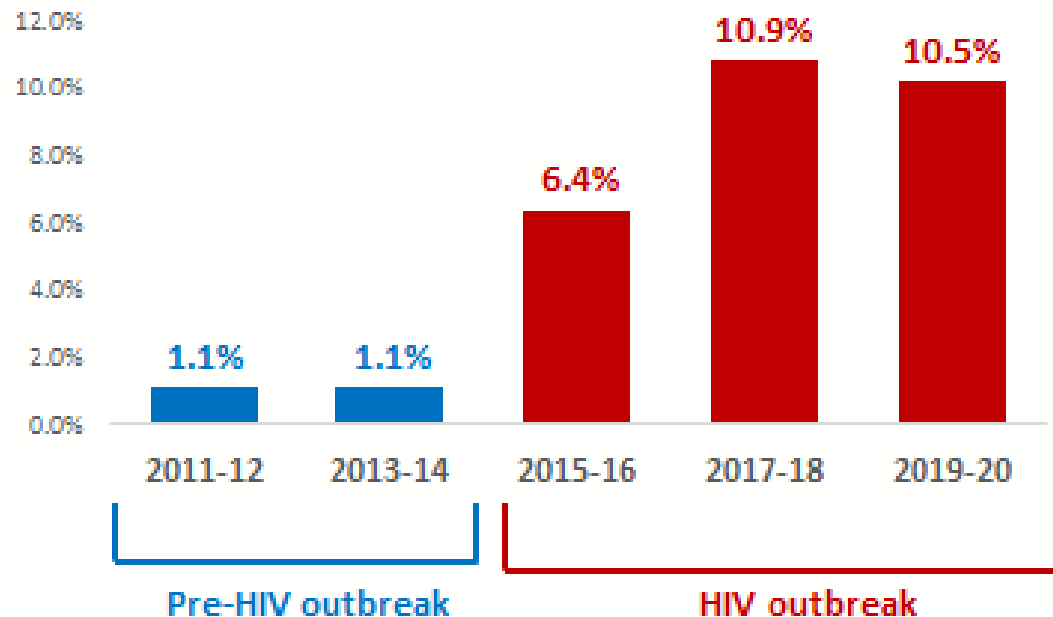
**OFFICIAL**

# Contents

- Background
- The Thistle Service
- Learning

# Background

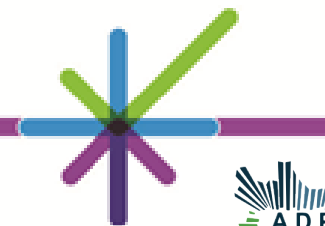
## Rise in HIV prevalence in the population of PWID in Glasgow City



- 10-fold rise in prevalence of HIV infection among PWID observed in Glasgow city between 2013 and 2017
- Plateauing in prevalence of HIV infection among PWID between 2017 and 2019 (i.e. pre-COVID)

Source: Needle Exchange Surveillance Initiative

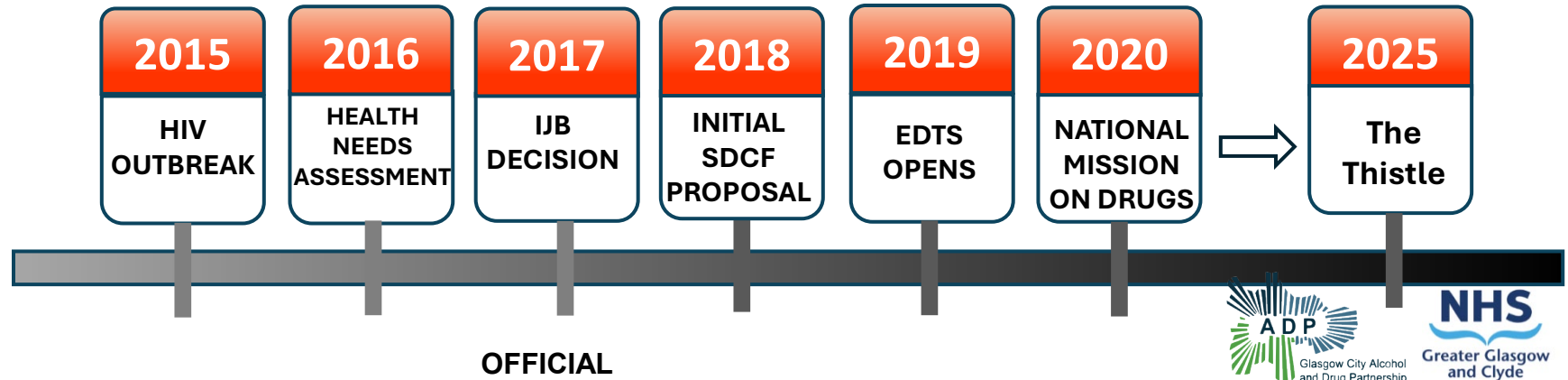
OFFICIAL



# Setting the Scene - Glasgow

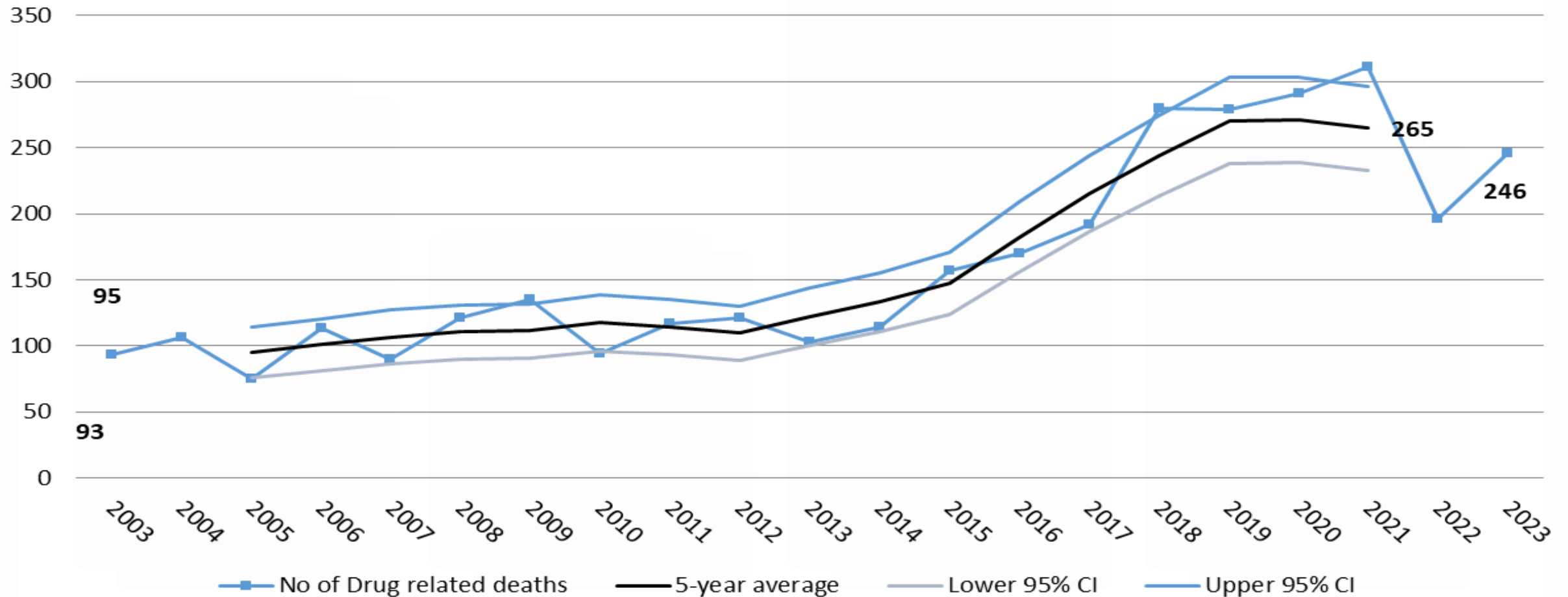


- Injecting ‘away from home’ increasing.
- Cocaine injecting > increased prevalence.
- Public Health Issues:
  - Discarded needles and paraphernalia
  - Bodily fluids



# DRD Trends in Glasgow City

## Drug-related deaths in Glasgow City 2003-2023



# The Legal Framework

What has changed?

September 2023 - New Lord Advocate offered the possibility of a  
***Statement of Prosecution Policy (SoPP)***

No change to the Misuse of Drugs Act 1971.

- Location near public injecting sites
- Co-located with other relevant services
- Community Engagement
- Independent Evaluation

OFFICIAL

# The Thistle

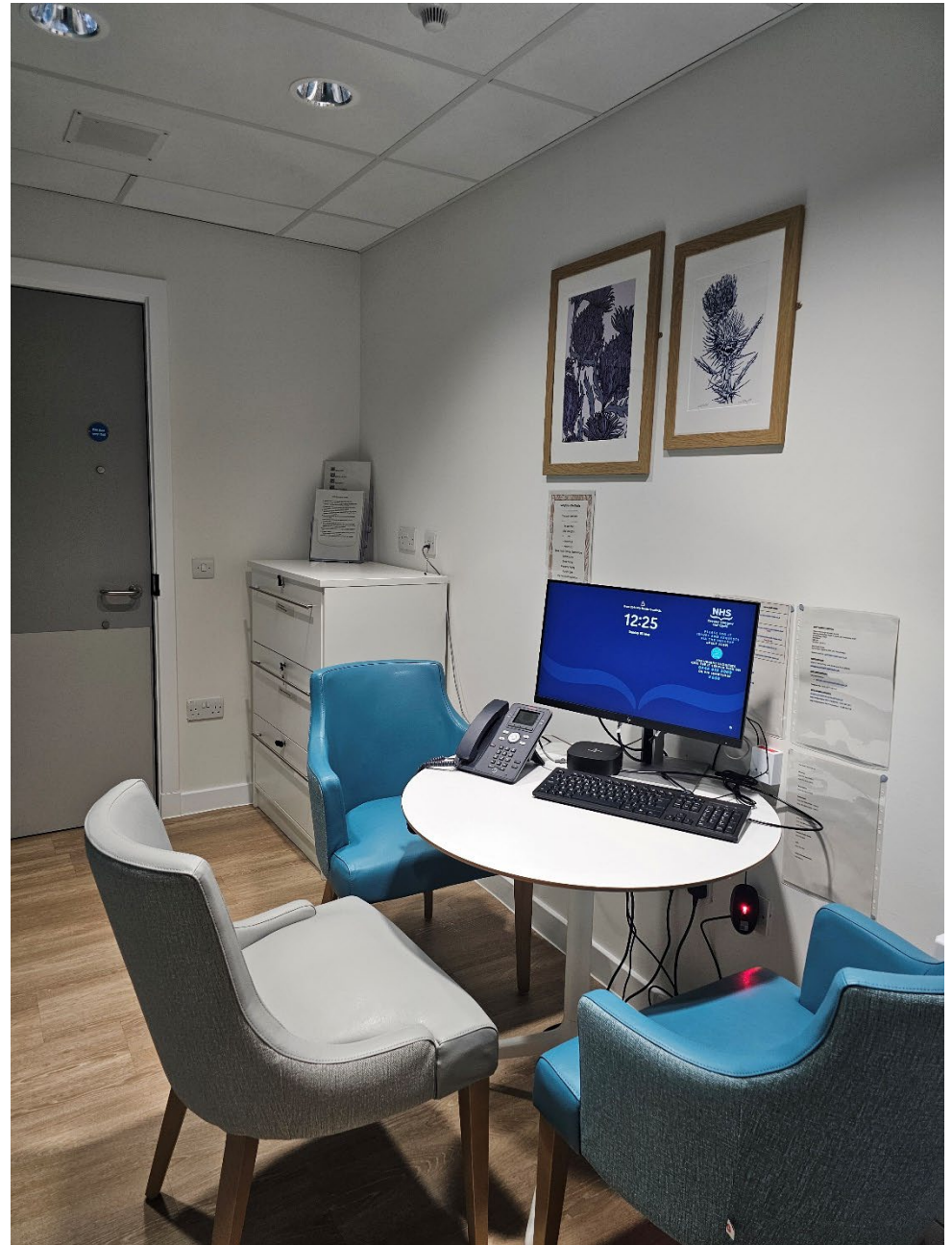
- A three-year pilot which opened on 13/01/2025; operating between the hours of 9am-9pm, 365 days a year situated within Hunter Street Health and Care Centre.
- Service co-located with Drug Treatment, Blood-Borne Virus, Sexual Reproductive Health, Housing Support and GP services.
- A fully integrated staff team, of all grades and disciplines including Medical, Nursing, Social Work, Harm Reduction Workers and Psychology roles.
- Outreach Model
- Ability for people to access the service confidentially.
- An application to run a drug-checking service pilot in Glasgow has been submitted to the UK Government Home Office.

- Previous proposal for an inhalation room removed.

~~OFFICIAL~~



OFFICIAL



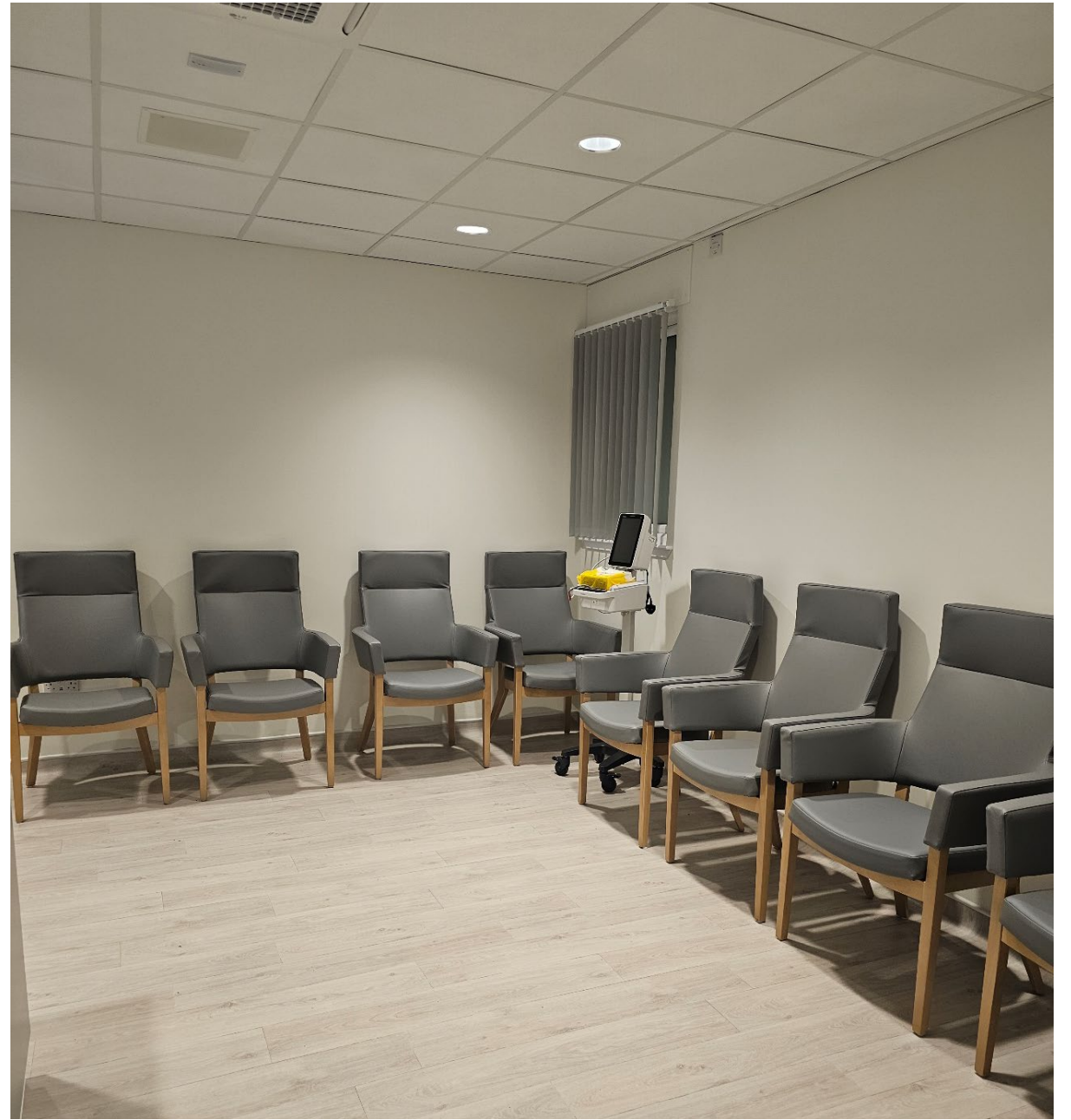
OFFICIAL



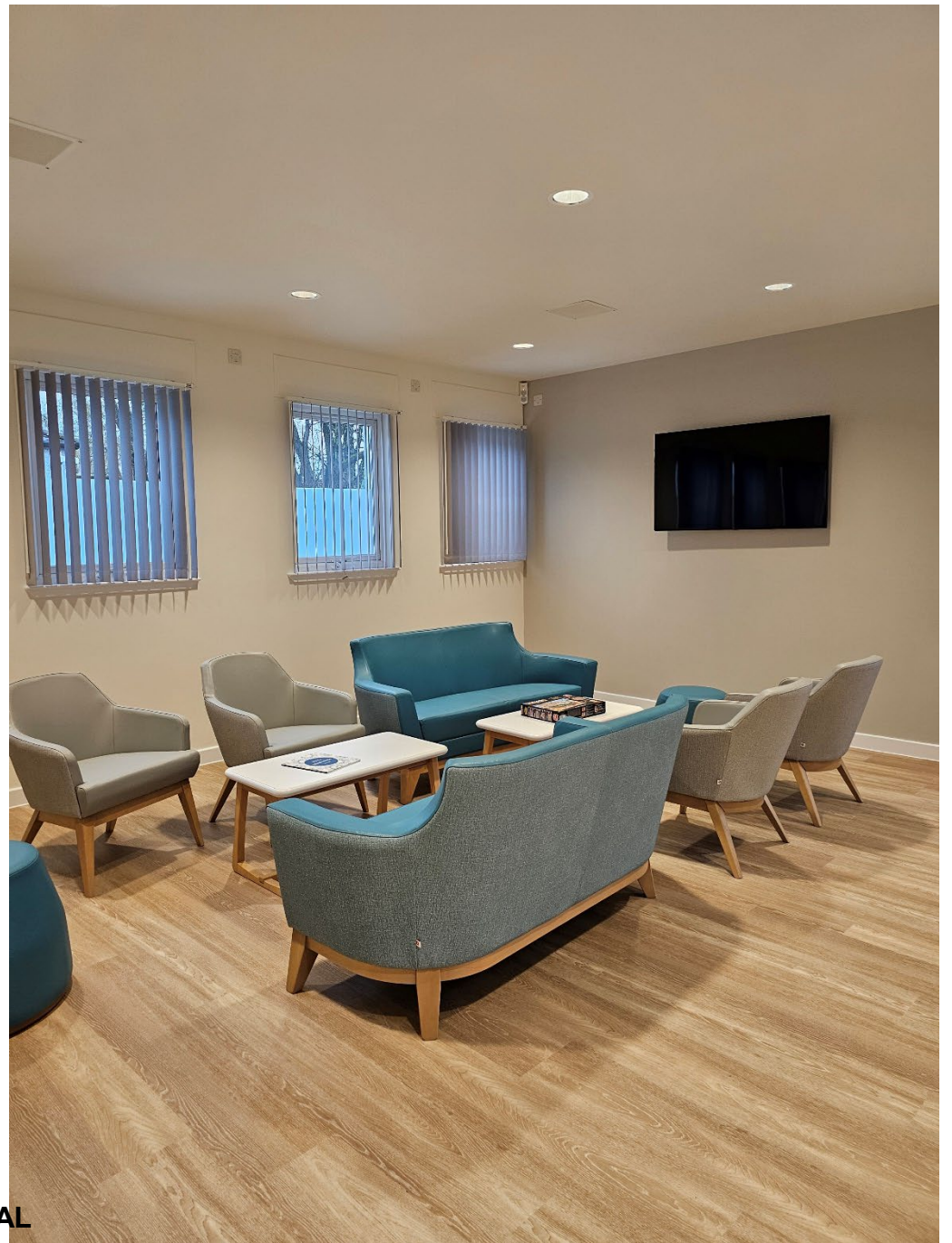
OFFICIAL



OFFICIAL



OFFICIAL



OFFICIAL



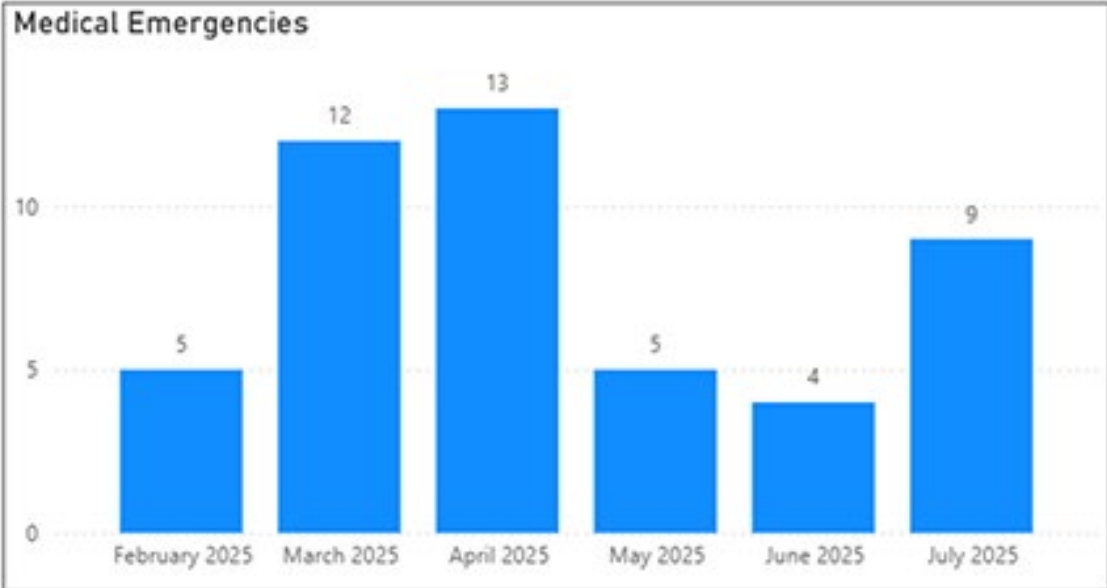
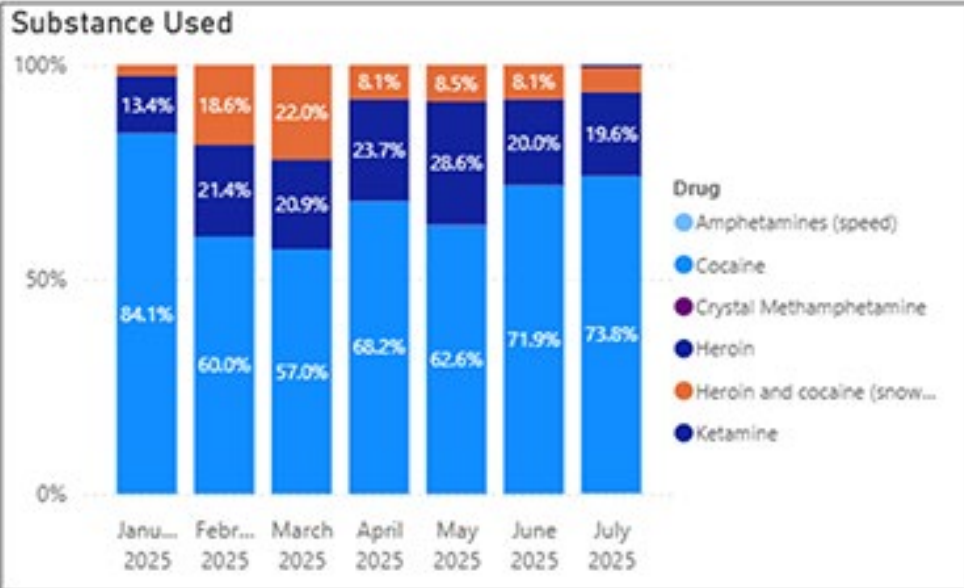
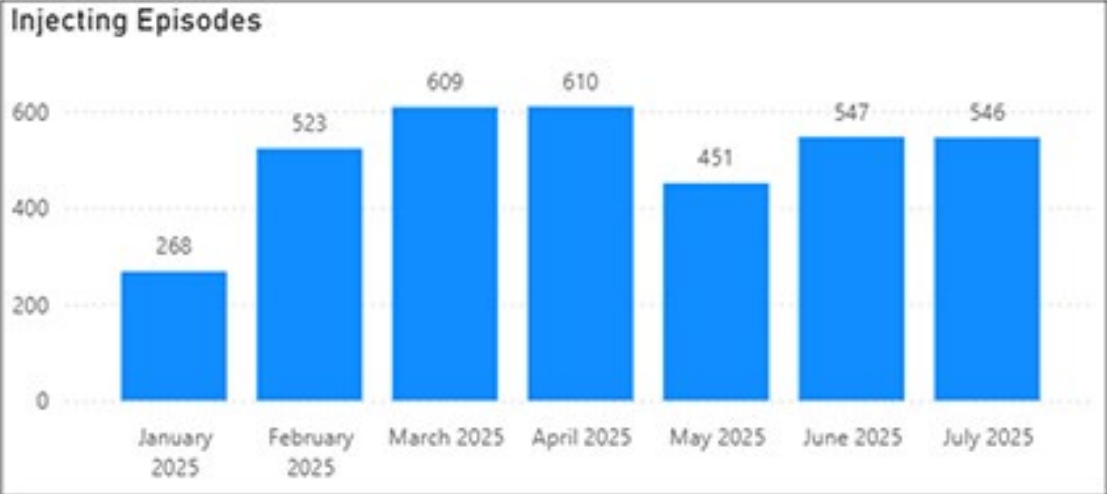
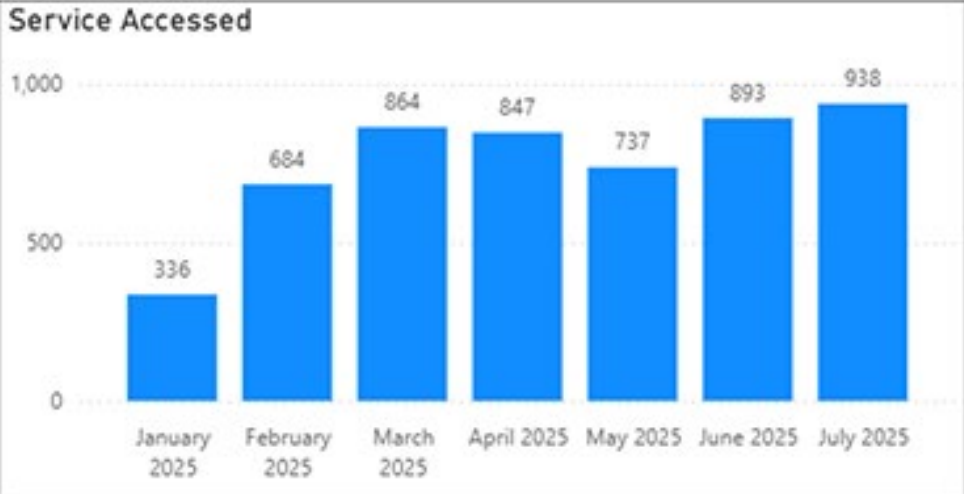
*Stay Safe*





OFFICIAL

<b>Total Unique Clients AD1</b> <b>377</b>	<b>Distinct Male Clients CD1</b> <b>305</b>	<b>Distinct Female Clients CD1</b> <b>72</b>	<b>Distinct Trans Clients CD1</b> <b>--</b>	<b>Times Accessed</b> <b>5,299</b>	<b>Injecting Episodes (Booth Accessed)</b> <b>3,554</b>	<b>Total Emergencies</b> <b>48</b>
---	--	---	--	---------------------------------------	--	---------------------------------------



OFFICIAL

# Learning

- Living Experience Involvement – Service User Forum / Reference Groups
- Access for Women
- Trauma Informed Approaches
- Changing Drug Trends – Drugs / Method of Use / Hours
- Need for an Inhalation Space + Drug Checking Service
- Limitations of Legal Framework – Sharing / Tourniquets
- Community Engagement – Forum / Messaging
- Police Liaison
- International Collaboration

## The Thistle



Our kids have to get streetwise, people are doing drugs right outside home



'Drug bins normalise needles on our streets' say furious Calton residents



Council hits back over fears Thistle Centre has increased dumped needles



Council clear up drug den near The Thistle safer drug consumption room



Residents to pay to clean-up 'significant increase in needles' near drug room



'There's no hope' says Glasgow drug addict over The Thistle safer consumption room

# UK's first legal 'shooting gallery' for drug addicts to take heroin and cocaine under medical supervision opens its doors

By [EMILY JANE DAVIES](#)

07:53 13 Jan 2025, updated 08:11 13 Jan 2025



## BIN THE MONEY Fury as Glasgow city council shell out 'shocking' £5K for needle bins outside controversial fix room

[Graham Mann](#), Crime Reporter

Published: 22:06, 11 Aug 2025 | Updated: 22:06, 11 Aug 2025



OFFICIAL

MARISSA MACWHIRTER

# Why are some people painting Calton as a needle-infested hell hole?

5TH JULY ANNIE WELLS EAST END THE THISTLE HEALTH POLITICS GLASGOW SCOTLAND

By Marissa MacWhirter  
Columnist  
marissamay1

Share 4 Comments



Fungus is Not from Toe the Main Enemy of Fun Stop Fungus



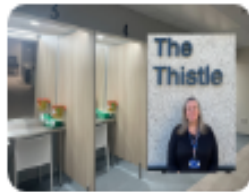
### What's it really like inside UK's first drug consumption room?

news.stv.tv



### Global drug policy experts visit The Thistle - Scottish Drugs Forum

sdf.org.uk



### Nurses taking 'person-centred' approach to drug use at new facility | Nursing Times

nursingtimes.net



### Alarms, overdoses and saving lives: 48 hours in UK's first drug injection room

bbc.com



### Inside the UK's first drug consumption room – podcast

theguardian.com

# London Review OF BOOKS

Sign in

Subscribe

THE PAPER SUBJECTS BLOG PODCASTS & VIDEOS EVENTS SHOP NEWSLETTERS

Vol. 47 No. 11 · 26 June 2025

## ‘Bang! I was out’ Dani Garavelli on the case for drug consumption rooms

3868 words



OFFICIAL a sunny afternoon last month Ryan arrived at the Thistle, a one-

Dani Garavelli

02 July 2025  
Wednesday

# Public Engagement

Community Engagement Forum

Service Open Visits

HSCP SDCF Webpage-  
[www.glasgowcity.hscp.scot/sdcf](http://www.glasgowcity.hscp.scot/sdcf)

The Thistle – Service Point of View Video:  
[The Thistle - Safer Drug Consumption Room](#)

Glasgow City HSCP Service Video:  
[Safer Drug Consumption Facility](#)

OFFICIAL

## The Thistle

Glasgow City's Safer Drug Consumption Facility

The Safer Drug Consumption Room in Glasgow is called The Thistle. It is based at Hunter Street Health and Care Centre and open 365 days a year from 9am to 9pm.

### What is a Safer Drug Consumption Facility?

The Thistle is a safe, clean, warm and welcoming service where you can inject your drugs. If you choose, the staff will also help you access other recovery and support services you need. Our staff team includes people with lived experience.

### Will I be stopped by the police if I try to use this service?

You will not be stopped for solely trying to access The Thistle. You will only be stopped if you are engaged in activity that would provide Police Scotland with reasonable cause to stop you and/or search you. The Hunter Street Health and Care Centre is home to many services, so entering the building will not necessarily identify anyone as using The Thistle services.

### Confidentiality

This is a confidential service. For more information, visit:  
[glasgowcity.hscp.scot/sdcf-service-user-information](http://glasgowcity.hscp.scot/sdcf-service-user-information)

### Why should I use the service?

If you inject drugs, The Thistle will be a safer option for you.

- you will have access to vein finders
- you will have access to wound care
- you will have access to advice from a range of health and social care staff
- staff will be able to respond if you overdose or have any other problems
- you will have access to our clothes store and shower facilities
- the lounge has tea and coffee, Wifi and staff available to support with any issues you may have
- there is a patio where you can smoke tobacco.

### What are the rules of the service?

Those attending the service:

- must be over the age of 18
- can only inject the drugs they bring onto the site
- cannot consume alcohol
- cannot share or sell drugs on site, and
- cannot help others to make up or inject drugs

At present we are not able to offer smoking or inhalation facilities for consuming drugs or provide tourniquets.



Watch our video of  
**The Thistle** to see  
how the service works.

For more information, visit:  
[glasgowcity.hscp.scot/sdcf](http://glasgowcity.hscp.scot/sdcf)



# References

1. 'Taking away the chaos: the health needs of people who inject drugs in public spaces in Glasgow city centre': [nhsggc\\_health\\_needs\\_drug\\_injectors\\_full.pdf](#)
2. National Mission on Drug – Scottish Government: [National mission on drugs - Alcohol and drugs - gov.scot](#)
3. Lord Advocate Statement of Prosecution: [Safer Drug Consumption Room Statement of Prosecution Policy 8 January 2025.pdf](#)